

# **PineApp™ products on VMware™**

## **Quick Installation Guide**



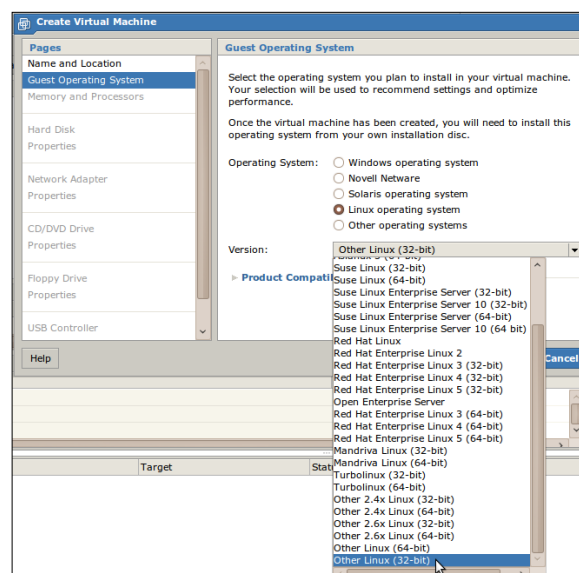
PineApp products (Mail-SeCure, Archive-SeCure, Surf-SeCure) are now fully available for installation on Virtual Machine (VMWare) platforms. The following manual provides assistance in installing PineApp product’s Virtual Machine on VMware servers and Esxi platforms.

### **Step 1: Installing PineApp product over Virtual Machine**

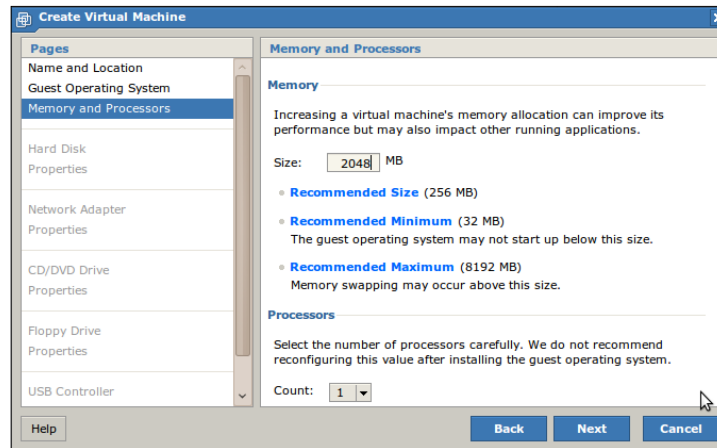
1. Log on to your VMware platform.
2. Click on **Virtual Machine > Create new Virtual Machine**



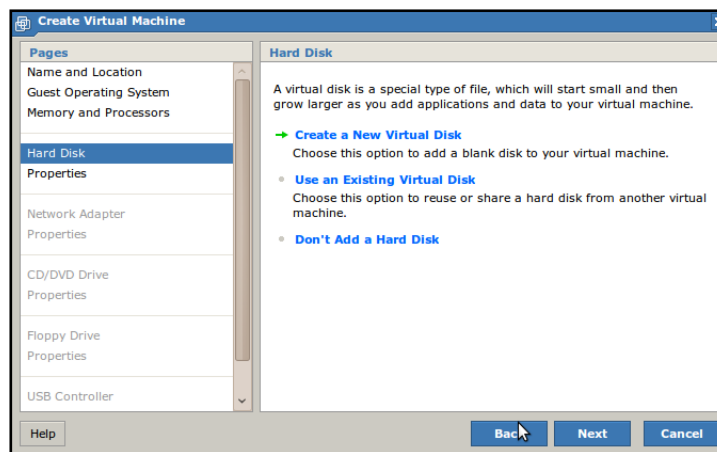
3. Under **Name and Location** menu, type the new Virtual Machine’s name (preferreably product’s name, Mail-SeCure for example)
4. Under **Guest Operating System** menu:
  - a. Choose **Linux operating system**
  - b. Choose **Other 2.6x (32-bit)** from the **Version** dropdown menu.
  - c. Click on Next



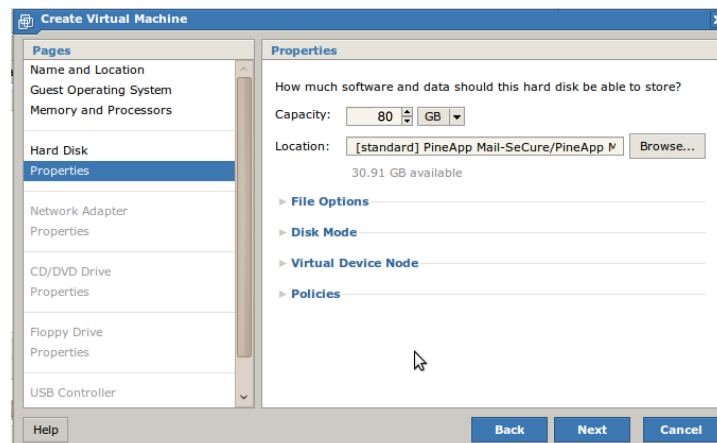
5. Under **Memory and Processors** menu:
  - a. Type a minimum of 2048 (MB) on **Size**\*
  - b. Set number of processors to the required number in the **Count** dropdown menu\*
  - c. Click on **Next**



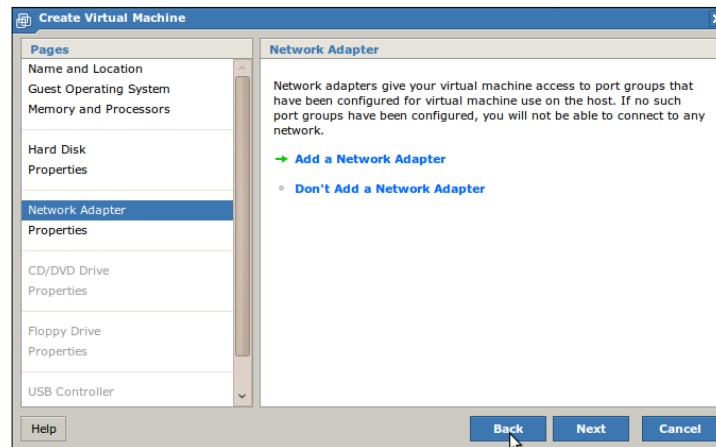
6. Under **Hard Disk** menu, click on **Create a New Virtual Disk** and click on Next.



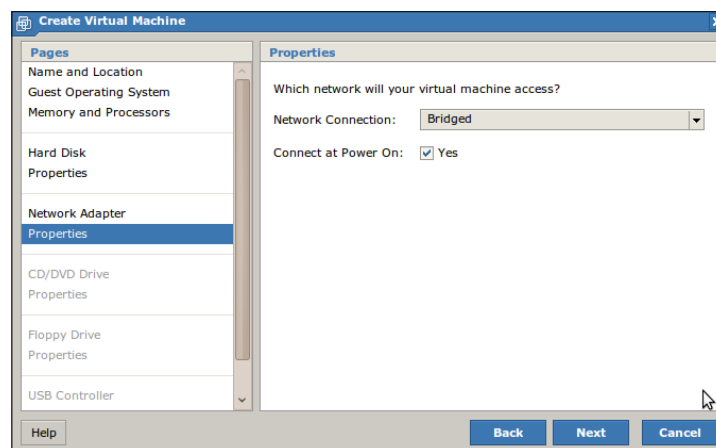
7. Under **Hard Disk Properties**,
  - a. Set capacity to a minimum of 80 GB (capacity varies for Archive-SeCure users, according to the purchased model)
  - b. Under **File options**, check **"Allocate all space"**, and click on **Next**.



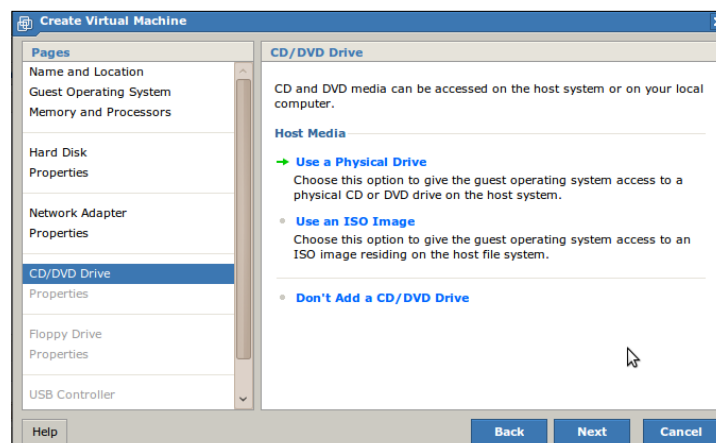
8. Under **Network Adapter** menu, click on **Add a new adapter** and **Next**.



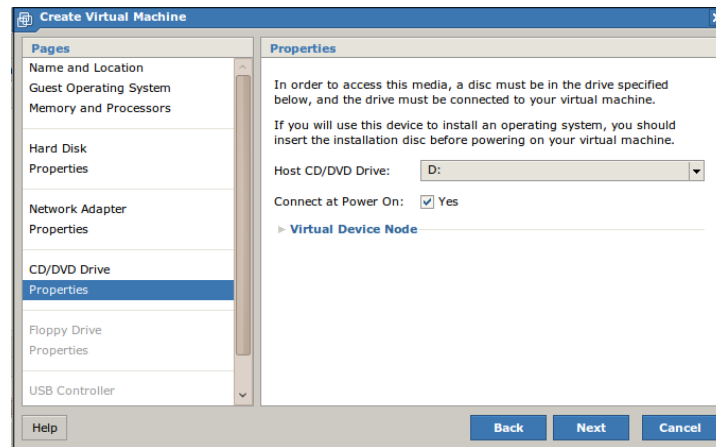
9. Under the following **Properties** menu, choose **Bridged** from the **Network connection** dropdown menu.



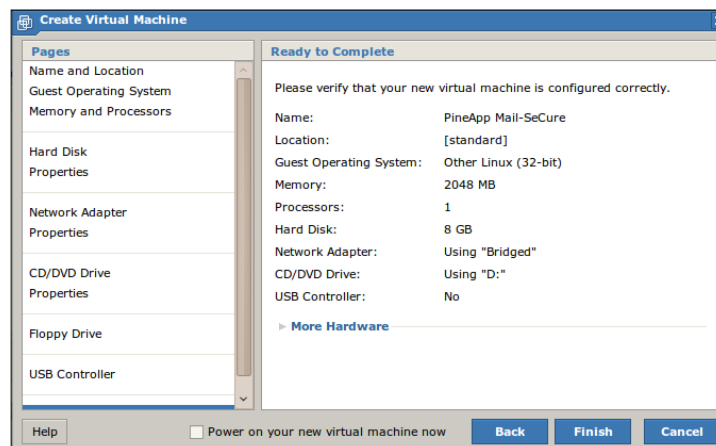
10. Under **CD/DVD drive** menu, choose **Use a Physical drive** and click on Next



11. Under **CD/DVD Properties**, choose the drive in which the installation instance (CD, DOK etc.) is located.




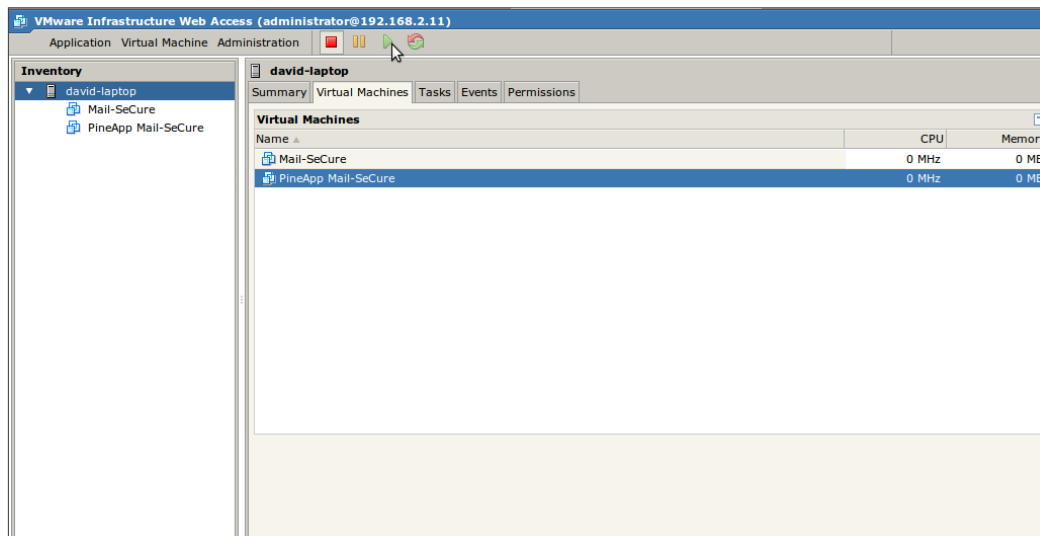
12. Keep clicking on **Next** and once verifying all your settings are correct on **Summary** tab, click on **Finish**.



## **Step 2: Activating PineApp product's Virtual Machine**

In order to complete installation and activate your Virtual Machine

- a. Go to **Virtual Machines** tab.
- b. Check the newly added product's virtual machine name.
- c. Click on the  icon.



For further information and installation procedures for Mail-SeCure, Archive-SeCure and Surf-SeCure, please refer to each product's corresponding quick installation guide and/or user manual.

**For further information and/or questions, please contact PineApp's support at [Support@pineapp.com](mailto:Support@pineapp.com), or by phone at +972-4-8213121 x 3.**