



Windows Server® 2008
Hyper-V™

PineApp™ Software on HyperV

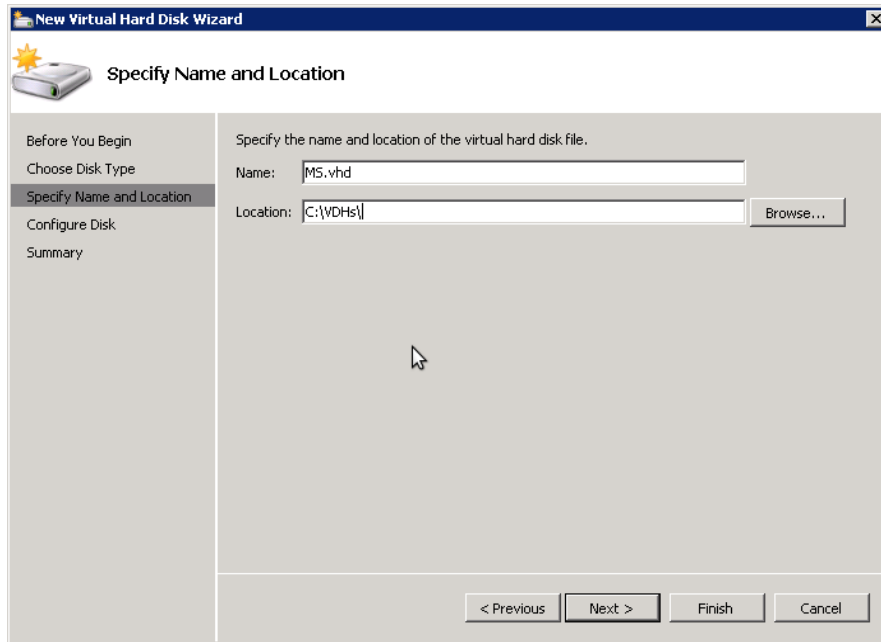
Quick Installation Guide

September, 2010

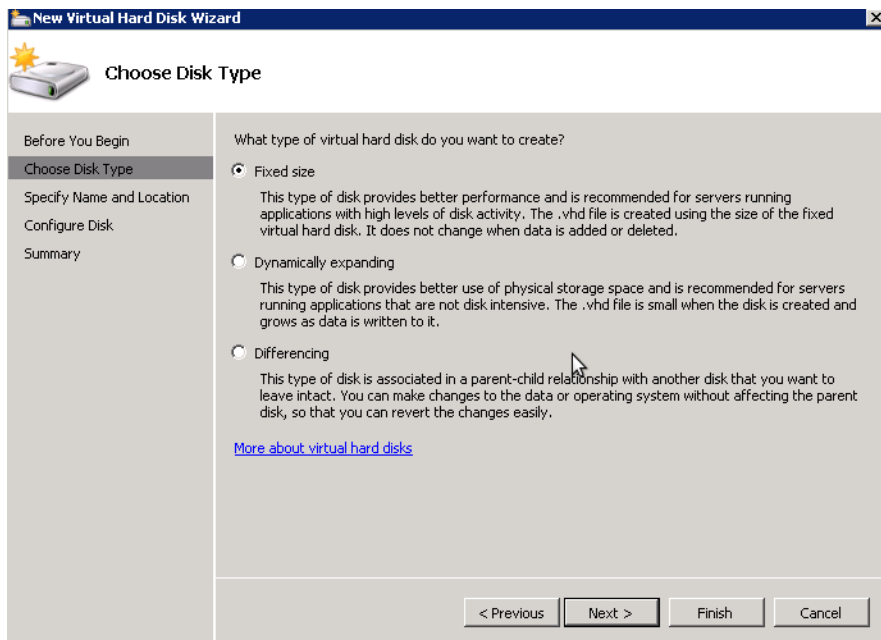
PineApp products (Mail-SeCure, Surf-SeCure and Archive-SeCure) are now fully available for installation on a Hyper-V virtualized environment. The following manual supplies detailed instructions for installing a new PineApp virtual machine in a Hyper-V environment.

Step 1: Creating a Virtual Hard Disk

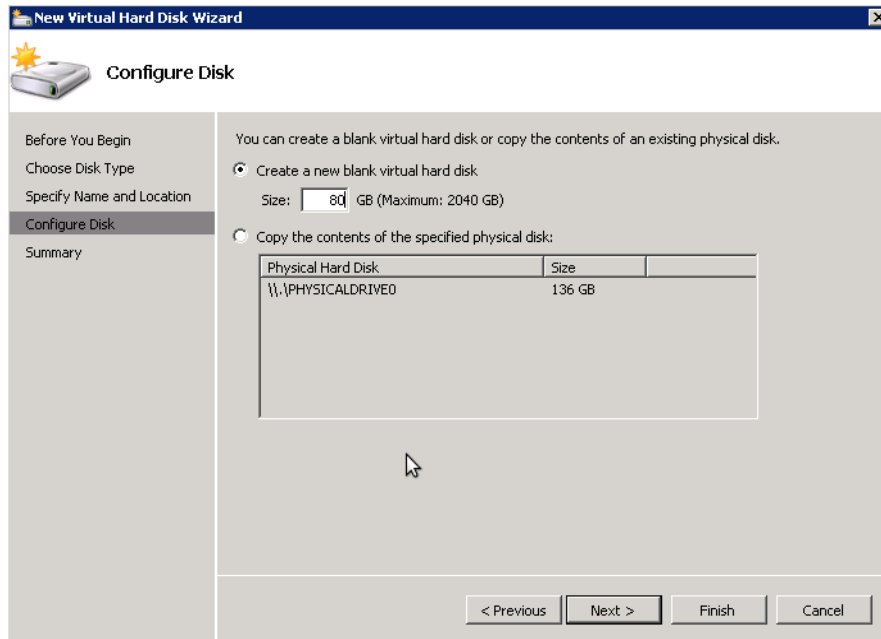
1. Create New VHD (Virtual Hard Disk) with the following parameters:



2. In **Disk Type** section, choose **Fixed Size**

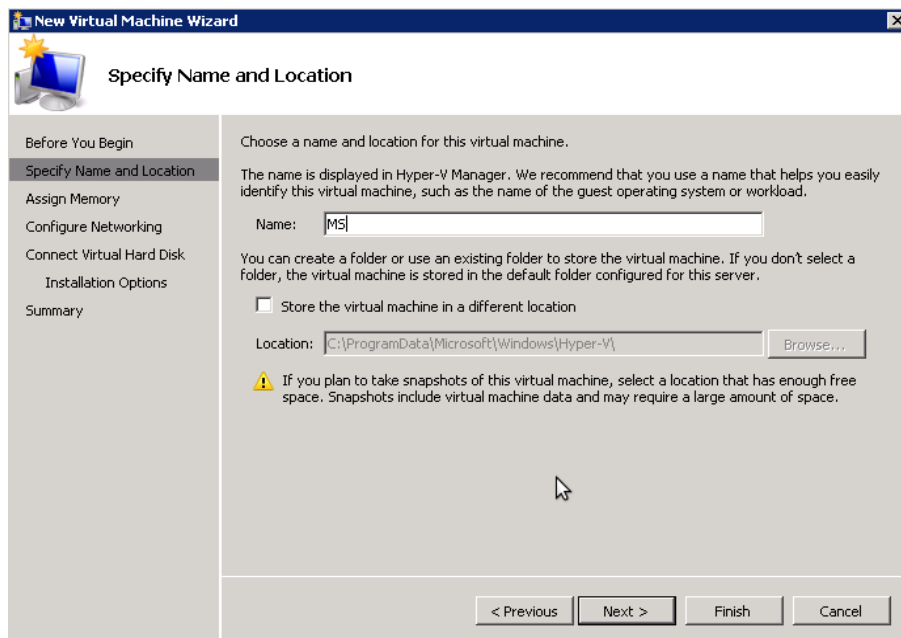


3. Set disk size to at least 80 GB

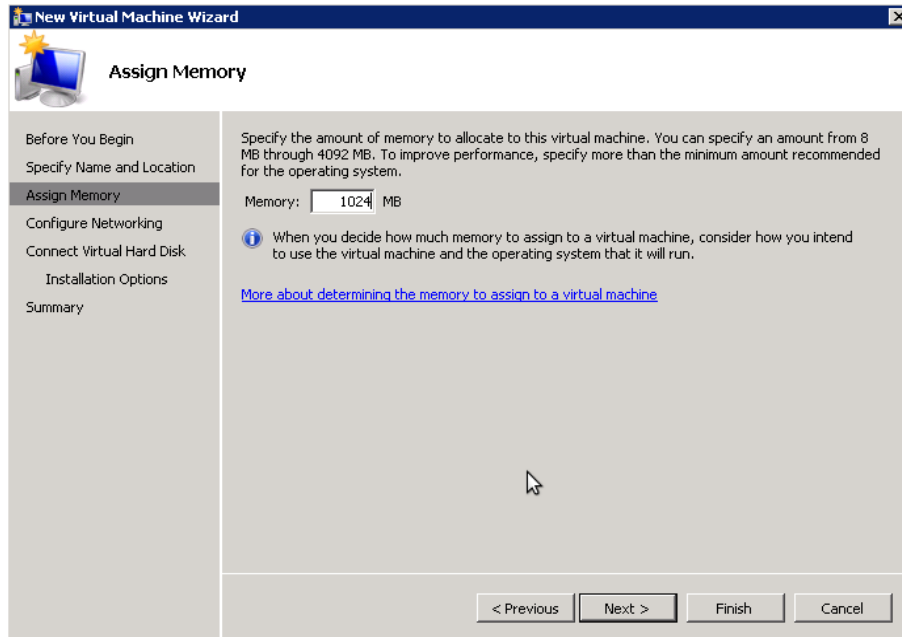


Step 2: Creating a new Virtual Machine

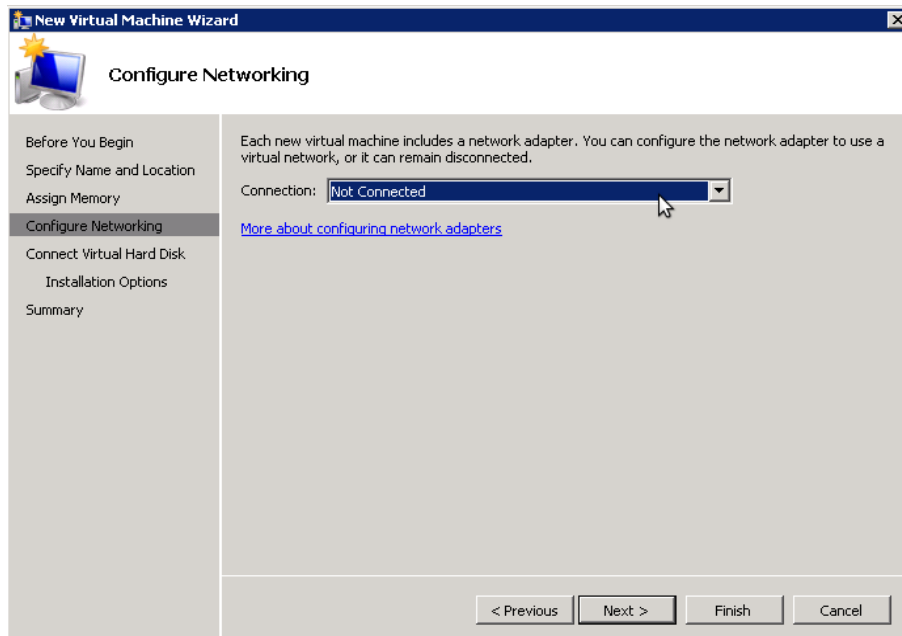
1. Create New VM (Virtual Machine) with following parameters:



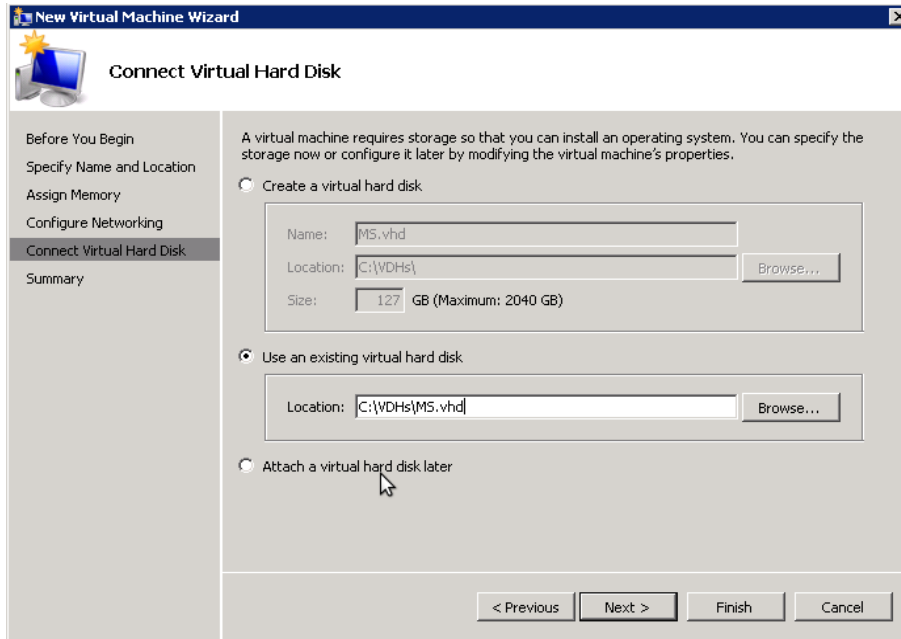
2. In **Assign Memory** section, VM's memory should be set to at least 1024 MB



3. In **configure Networking**, set connection to Not Connected.



4. In **Connect Virtual Hard Disk** section, choose the Virtual Hard Drive you created

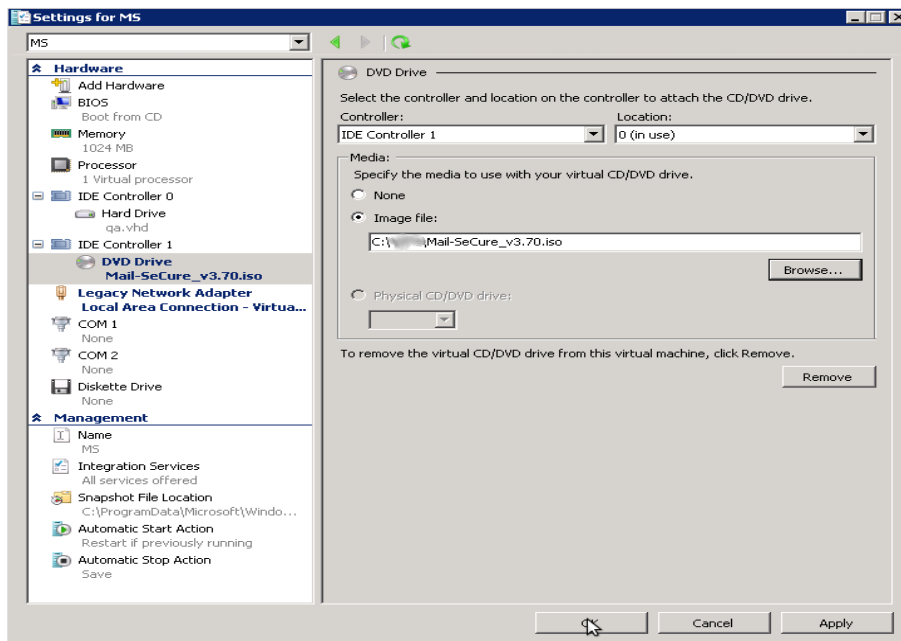


Step 3: VM Adjustments

Connect to your VM (do NOT power on it yet!).

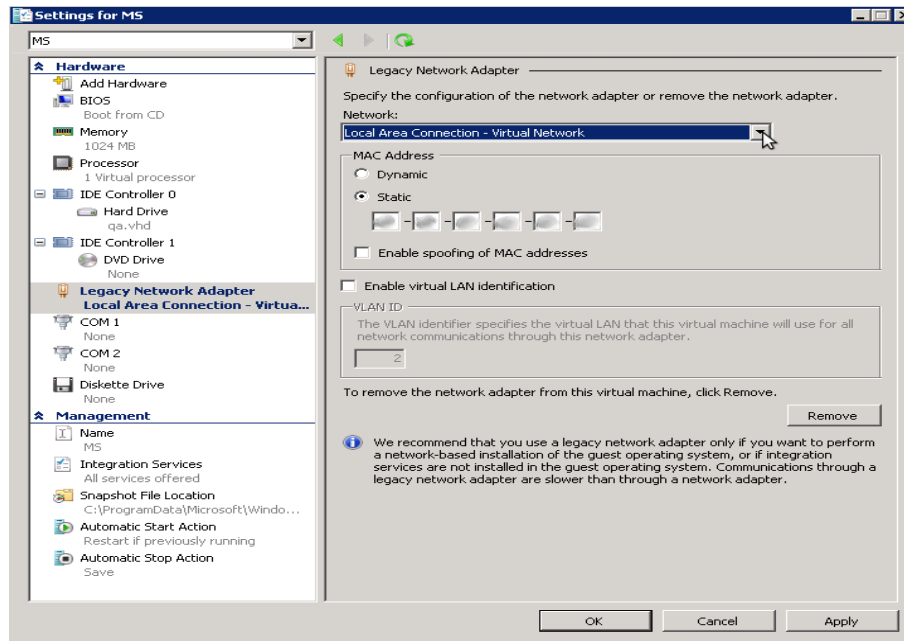
Go to **File->Settings**, and fill in the following settings in each of the tabs:

1. **BIOS** - Ensure that the boot order is CD, IDE, Legacy Network adapter, Floppy
2. **Memory** - tune up amount of memory (at least 1024MB)
3. **Processor** - tune up amount of Virtual Processors (current version supports up to 8)
4. **IDE Controller 0 (Hard Drive)** - point the drive to VHD image file previously created
5. **IDE Controller 1 (DVD Drive)** - point the drive to the downloaded installation's ISO image file



5. Network Adapter:

- a. Remove existing adapter
- b. Press Add Hardware, choose Legacy Network Adapter and press Add
- c. In Network section choose your Virtual Network
- d. In MAC address section choose Static and write down desired MAC address
- e. Press **OK**



Finishing Installation:

As soon as all the above steps were performed, you can start the VM and the actual installation process.

For Mail-SeCure installation, please refer to the following guide:

http://www2.pineapp.com/media/downloadable/installation_guides/Mail-SeCure%20QIG.pdf

For Surf-SeCure software installation, please refer to the following guide:

http://www2.pineapp.com/media/downloadable/installation_guides/Surf-SeCure%20QIG.pdf

For Archive-SeCure software installation, please refer to the following guide:

http://www2.pineapp.com/media/downloadable/installation_guides/Archive-SeCure%20QIG.pdf

Important!

After installation complete, do not forget to change boot order to: IDE, CD, Legacy Network adapter, Floppy